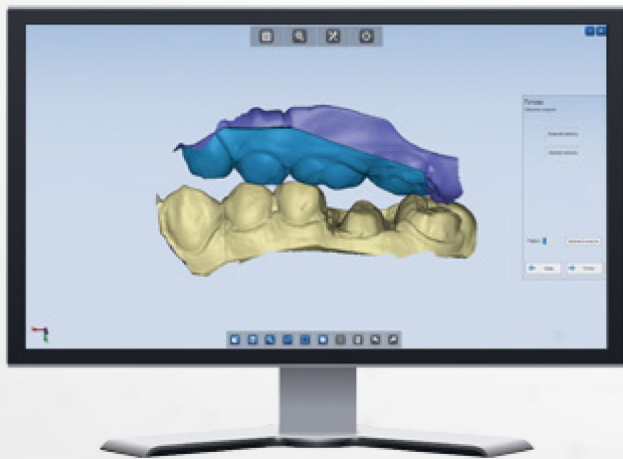




AutoScan DS-X

Most Cost-effective Choice



E-mail: xtcera@xianton.com

Tel: 0086 755 8600 1804

Web: www.xtcera.com



Blue Light Scanning Technology

Blue light 3D scanning technology replaces the white light 3D scanning technology, less sensitive to the ambient light.



Cost-effective

The 3D scanner helps you enter the digital dental field with low threshold and it has the stablest quality, the most preferential price with no bundle sales.



High Efficiency

Scanning time : Full Arch 18s; Upper Jaw / Lower Jaw 40s; 2~8 teeth 41s; 1 single tooth 40s; Impression 2mins

Specification

Model	AutoScan DS-X
Camera Resolution	1,300,000
Accuracy	<0.015mm
Scanning Range	100mm*100mm*75mm
Scanning Time	Full Arch 18s Upper Jaw / Lower Jaw 40s 2~8 teeth 41s, 1 single tooth 40s Impression 2mins
Scanning Principle	Structured Blue Light 3D Scanning
Temperature	10°C~30°C (Higher temperature will affect the scanning result)
Dimension	250mm*380mm*445mm
Weight	18kg
Output	STL, OBJ
Interface	USB 2.0
Power	AC24V

Notice: More detailed information about the products, please visit our web for inquiry.